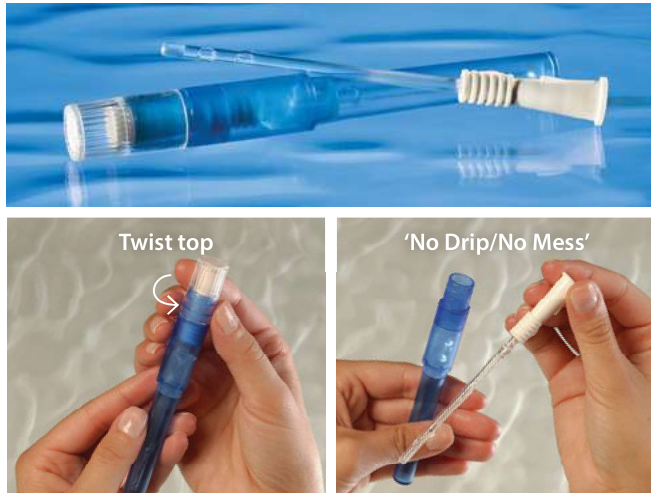


READY-TO-USE

Request free samples • www.curemedical.com • 800.422.8811

Cure Twist®

The small, attractive Cure Twist is similar to the design of a cosmetic item – so it is an ideal choice for women who value portability and discretion. It features an easy, twist open top and smooth, fire polished eyelets on a straight tip. After use, the Cure Twist catheter can go back into the container for clean, secure, and discreet disposal.

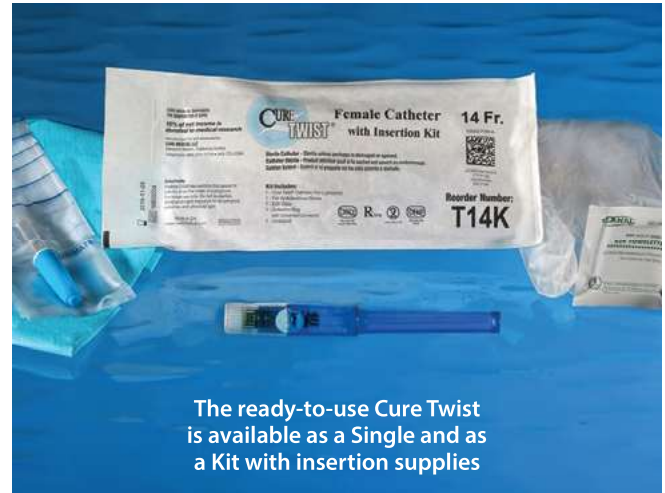


The Cure Twist offers ready-to-use convenience and discreet portability. Water soluble gel helps enable comfortable use with a 'No Drip/No Mess' benefit. If needed, the universal funnel can easily connect to standard drainage options.

Female, Single

Offered as a case of 300 units (10 boxes of 30)

Part No.	Description	FR Size
T8	Female, Straight Tip	8
T10	Female, Straight Tip	10
T12	Female, Straight Tip	12
T14	Female, Straight Tip	14
T16	Female, Straight Tip	16



The Cure Twist Kit with insertion supplies includes a BZK wipe, ambidextrous gloves, underpad, and 1500 ml collection bag with universal connector.

Female, Kit

Offered as a case of 90 units (3 boxes of 30)

Part No.	Description	FR Size
T8K*	Female, Straight Tip w/Insert. Kit	8
T10K*	Female, Straight Tip w/Insert. Kit	10
T12K*	Female, Straight Tip w/Insert. Kit	12
T14K*	Female, Straight Tip w/Insert. Kit	14
T16K*	Female, Straight Tip w/Insert. Kit	16

[CLICK to go to product webpage with video](#)

*Not available in Canada.